

MONUMENTATION STANDARDS

A. MONUMENT STANDARD 1200-A: 1"x18" IRON PIPE

THE 1200-A MONUMENT IS TO BE SET AT SECTION CORNERS, QUARTERS CORNERS, STREET CENTERLINES AT ANGLE POINTS, POINTS OF CURVATURE AND POINTS OF INTERSECTION, REAR LOT CORNERS, FRONT LOT CORNERS WHERE THERE IS NO ADJACENT CONCRETE CURBING AND TRACT BOUNDARIES AT ANGLE POINTS AND POINTS OF CURVATURE WHEN SAID POINTS FALL IN DIRT, NON HARDSCAPE, AREAS. FOR POINTS FALLING IN ASPHALT PAVEMENT, USE MONUMENT STANDARD 1200-B, EXCEPT THAT MONUMENT 1200-C OR 1200-D SHALL BE USED FOR PRIVATE STREETS. FOR POINTS FALLING IN CONCRETE, USE MONUMENT STANDARD 1200-E.

B. MONUMENT STANDARD 1200-B: 1" x 18" IRON PIPE WITH FRAME AND COVER.

THE 1200-B MONUMENT IS TO BE SET AT SECTION CORNERS AND QUARTER CORNERS, CENTERLINES OF PUBLIC STREETS AT POINTS OF CURVATURE, POINTS OF INTERSECTION AND ANGLE POINTS ONLY WHERE SAID POINTS FALL IN ASPHALT PAVEMENT. IF SAID POINTS FALL IN DIRT, USE MONUMENT STANDARD 1200-A. IF SAID POINTS FALL IN CONCRETE, USE MONUMENT STANDARD 1200-E.

NOTE: IF THE CENTERLINE OF A PRIVATE STREET INTERSECTS WITH THE CENTERLINE OF A PUBLIC STREET, USE MONUMENT STANDARD 1200-B.

C. MONUMENT STANDARD 1200-C: 5" COTTON GIN GEAR SPIKE

THE 1200-C MONUMENT IS TO BE SET ON THE CENTERLINES OF PRIVATE STREETS AT POINTS OF CURVATURE, POINTS OF INTERSECTION AND ANGLE POINTS WHEN SAID POINTS FALL IN ASPHALT PAVEMENT. IF SAID POINTS FALL IN CONCRETE, USE MONUMENT STANDARD 1200-E.

NOTE: IF THE CENTERLINE OF A PRIVATE STREET INTERSECTS WITH THE CENTERLINE OF A PUBLIC STREET, USE MONUMENT STANDARD 1200-B.

D. MONUMENT STANDARD 1200-D: 8" GALVANIZED BOAT SPIKE

THE 1200-C MONUMENT IS TO BE SET ON THE CENTERLINES OF PRIVATE STREETS AT POINTS OF CURVATURE, POINTS OF INTERSECTION AND ANGLE POINTS WHEN SAID POINTS FALL IN ASPHALT PAVEMENT. IF SAID POINTS FALL IN CONCRETE, USE MONUMENT STANDARD 1200-E.

NOTE: IF THE CENTERLINE OF A PRIVATE STREET INTERSECTS WITH THE CENTERLINE OF A PUBLIC STREET, USE MONUMENT STANDARD 1200-B.

E. MONUMENT STANDARD 1200-E: LEAD AND TAG

THE 1200-E MONUMENT IS TO BE SET AT THE INTERSECTION OF THE PROLONGATION OF THE SIDE LOT LINES AND THE TOP OF THE CONCRETE CURBING FOR ALL POINTS DESCRIBED IN SECTIONS A THROUGH D THAT FALL IN CONCRETE, CONCRETE WALLS OR STUCCO WALLS.

NOTE: IF A POINT FALLS ON A WOOD STRUCTURE, SAID POINT CAN BE MONUMENTED ON AN OFFSET, WITH THE APPROPRIATE MONUMENT, WITH THE TAG BEING ADDITIONAL STAMPED WITH A "WC" DESIGNATION. IF THIS IS IMPRACTICABLE, A 3/4" BRASS TAG WITH A 3" GALVANIZED DECK SCREW CAN BE SET AT THE ACTUAL LOCATION.

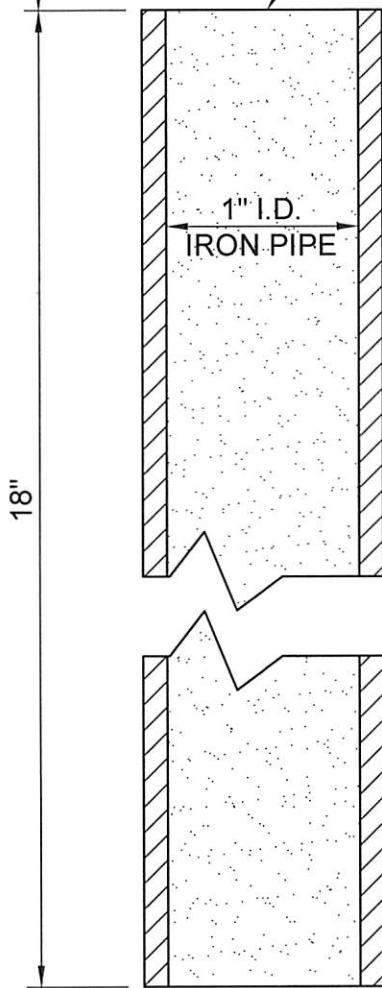
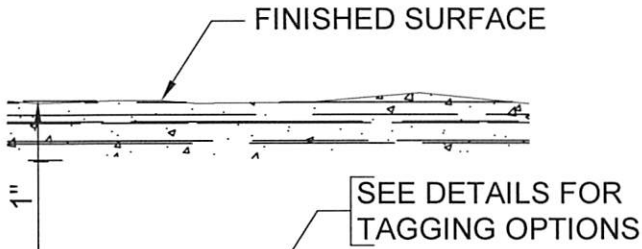


REVISION	DESIGN	DRAWN	DATE
ORIGINAL	AC/JAG	A.C./G.M.	07/02/07
REV. 1	AC/JF	J.F./G.M.	05/29/15

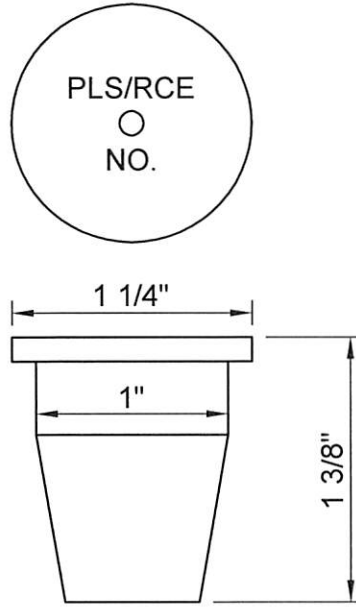
APPROVED BY THE CITY OF EL CENTRO PUBLIC WORKS DEPARTMENT, ENGINEERING DIVISION		
	R.C.E. 70281	05.29.15
ABRAHAM CAMPOS, P.E. SENIOR ENGINEER		DATE
	R.C.E. 24740	05.29.15
TERRY L. HAGEN, P.E. DIRECTOR OF PUBLIC WORKS		DATE

CITY OF EL CENTRO PUBLIC WORKS DEPARTMENT	
MONUMENTATION REQUIREMENTS	
DWG NO.	EC-1200

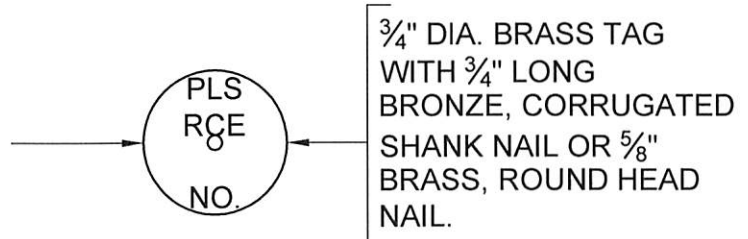
MONUMENT TYPE "A"



**1" x 18"
IRON PIPE**



PLASTIC PLUG



BRASS TAG

NOTE: WHEN USING A BRASS TAG, FILL THE IRON PIPE WITH CONCRETE AND SET TAG AND NAIL FLUSH.



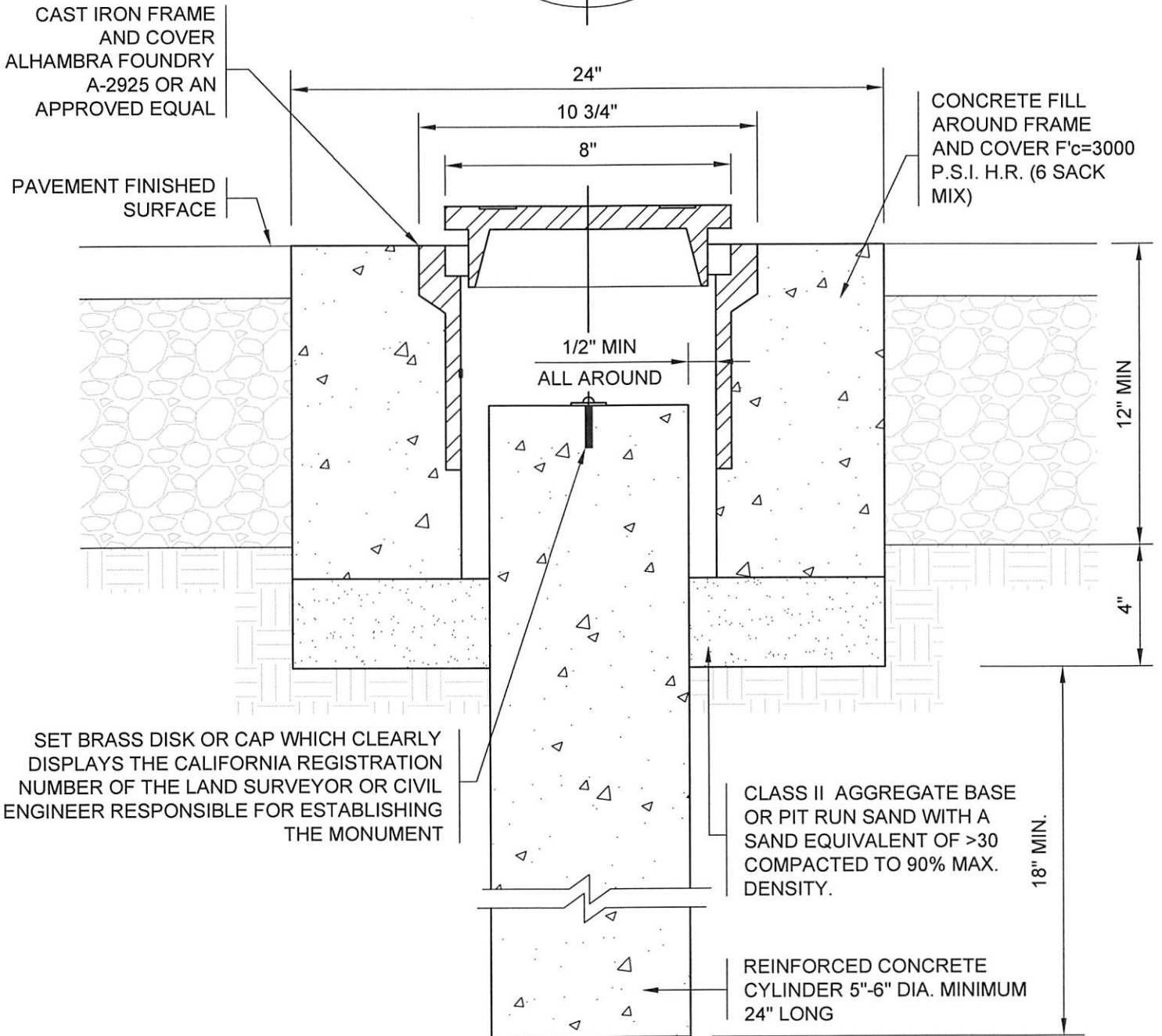
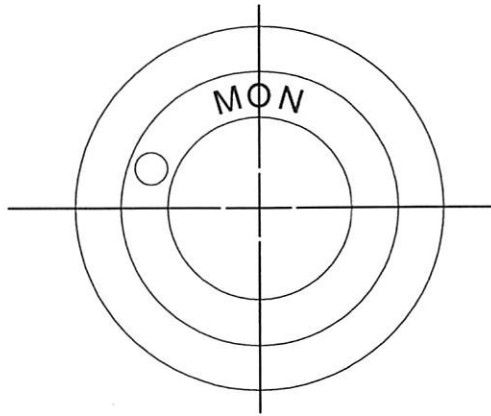
REVISION	DESIGN	DRAWN	DATE
ORIGINAL	AC/JAG	A.C./G.M.	07/02/07
REV. 1	AC/JF	J.F./G.M.	05/29/15

APPROVED BY THE CITY OF EL CENTRO PUBLIC WORKS DEPARTMENT, ENGINEERING DIVISION		
	R.C.E. 70281	05.29.15
ABRAHAM CAMPOS, P.E. SENIOR ENGINEER		DATE
	R.C.E. 24740	05.29.15
TERRY L. HAGEN, P.E. DIRECTOR OF PUBLIC WORKS		DATE

CITY OF EL CENTRO PUBLIC WORKS DEPARTMENT	
MONUMENT 1"x18" IRON PIPE	
DWG NO.	EC-1200 A

MONUMENT TYPE "B"

NOT TO SCALE



CAST IRON FRAME AND COVER
ALHAMBRA FOUNDRY
A-2925 OR AN APPROVED EQUAL

PAVEMENT FINISHED SURFACE

CONCRETE FILL AROUND FRAME AND COVER F'c=3000 P.S.I. H.R. (6 SACK MIX)

1/2" MIN ALL AROUND

12" MIN

4"

SET BRASS DISK OR CAP WHICH CLEARLY DISPLAYS THE CALIFORNIA REGISTRATION NUMBER OF THE LAND SURVEYOR OR CIVIL ENGINEER RESPONSIBLE FOR ESTABLISHING THE MONUMENT

CLASS II AGGREGATE BASE OR PIT RUN SAND WITH A SAND EQUIVALENT OF >30 COMPACTED TO 90% MAX. DENSITY.

18" MIN.

REINFORCED CONCRETE CYLINDER 5"-6" DIA. MINIMUM 24" LONG



REVISION	DESIGN	DRAWN	DATE
ORIGINAL	AC/JAG	A.C./G.M.	07/02/07
REV. 1	AC/JF	J.F./G.M.	05/29/15

APPROVED BY THE CITY OF EL CENTRO
PUBLIC WORKS DEPARTMENT, ENGINEERING DIVISION

Abraham Campos
R.C.E. 70281 05.29.15
DATE

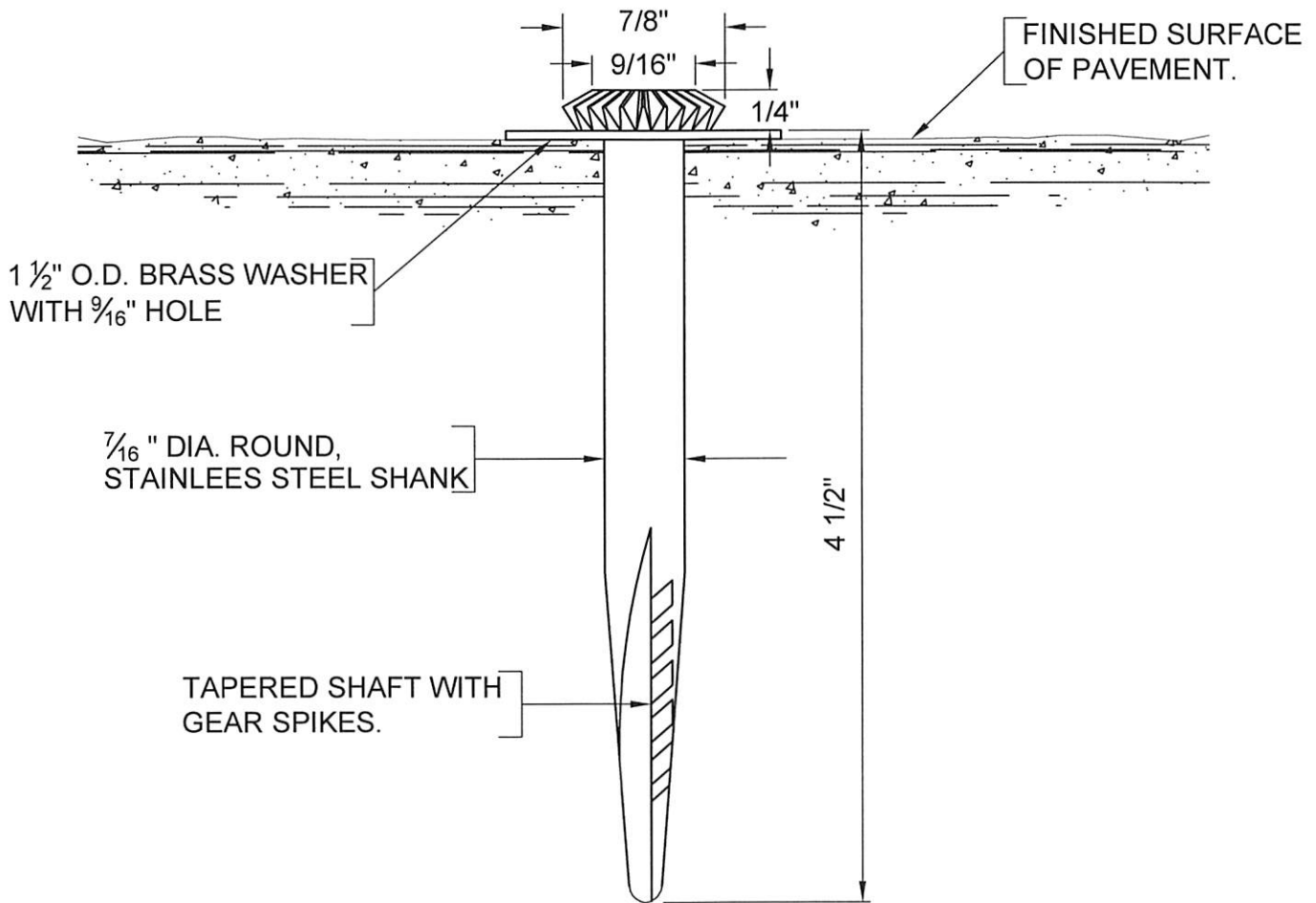
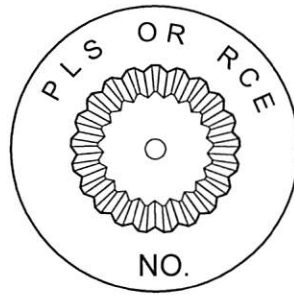
Terry L. Hagen
R.C.E. 24740 05.29.15
DATE

TERRY L. HAGEN, P.E.
DIRECTOR OF PUBLIC WORKS

CITY OF EL CENTRO
PUBLIC WORKS DEPARTMENT
MONUMENT
CONCRETE CYLINDER
w/FRAME AND COVER

DWG NO. **EC-1200 B**

MONUMENT TYPE "C"



5" COTTON GIN GEAR SPIKE

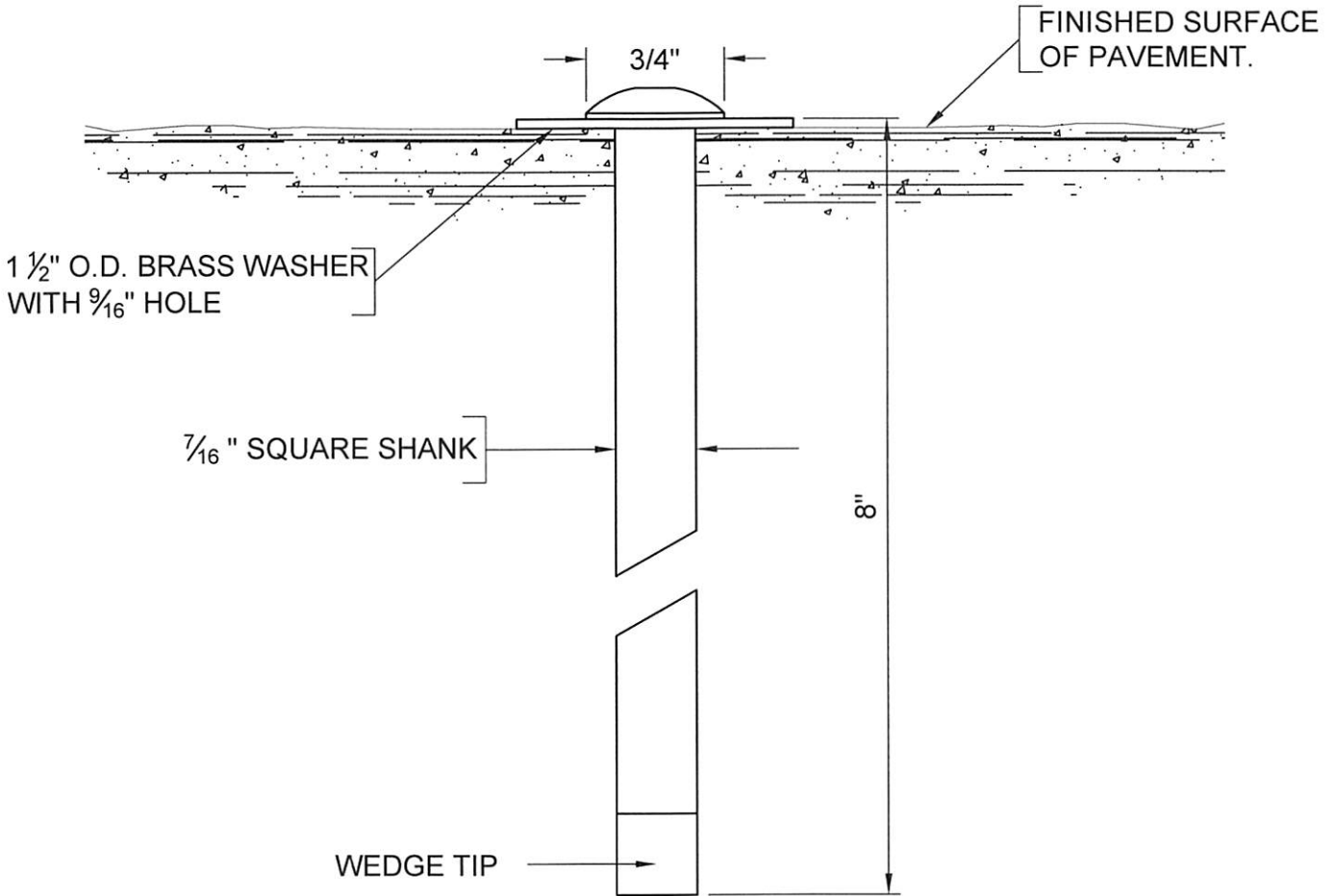
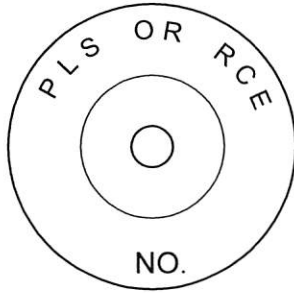


REVISION	DESIGN	DRAWN	DATE
ORIGINAL	AC/JAG	A.C./G.M.	07/02/07
REV. 1	AC/JF	J.F./G.M.	05/29/15

APPROVED BY THE CITY OF EL CENTRO PUBLIC WORKS DEPARTMENT, ENGINEERING DIVISION		
<i>Abraham Campos</i>	R.C.E. 70281	05.29.15
ABRAHAM CAMPOS, P.E. SENIOR ENGINEER		DATE
<i>Terry L. Hagen</i>	R.C.E. 24740	05.29.15
TERRY L. HAGEN, P.E. DIRECTOR OF PUBLIC WORKS		DATE

CITY OF EL CENTRO PUBLIC WORKS DEPARTMENT	
MONUMENT 5" COTTON GIN GREAR SPIKE	
DWG NO.	EC-1200 C

MONUMENT TYPE "D"



8" GALVANIZED BOAT SPIKE

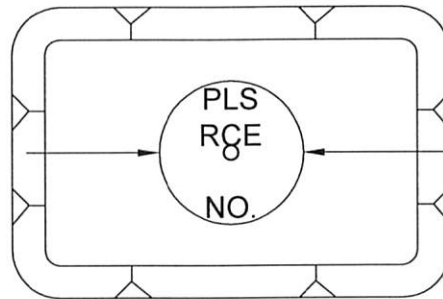


REVISION	DESIGN	DRAWN	DATE
ORIGINAL	AC/JAG	A.C./G.M.	07/02/07
REV. 1	AC/JF	J.F./G.M.	05/29/15

APPROVED BY THE CITY OF EL CENTRO PUBLIC WORKS DEPARTMENT, ENGINEERING DIVISION		
<i>Abraham Campos</i>	R.C.E. 70281	05.29.15
ABRAHAM CAMPOS, P.E. SENIOR ENGINEER		DATE
<i>Terry L. Hagen</i>	R.C.E. 24740	05.29.15
TERRY L. HAGEN, P.E. DIRECTOR OF PUBLIC WORKS		DATE

CITY OF EL CENTRO PUBLIC WORKS DEPARTMENT	
MONUMENT 8" GALVANIZED BOAT SPIKE	
DWG NO.	EC-1200 D

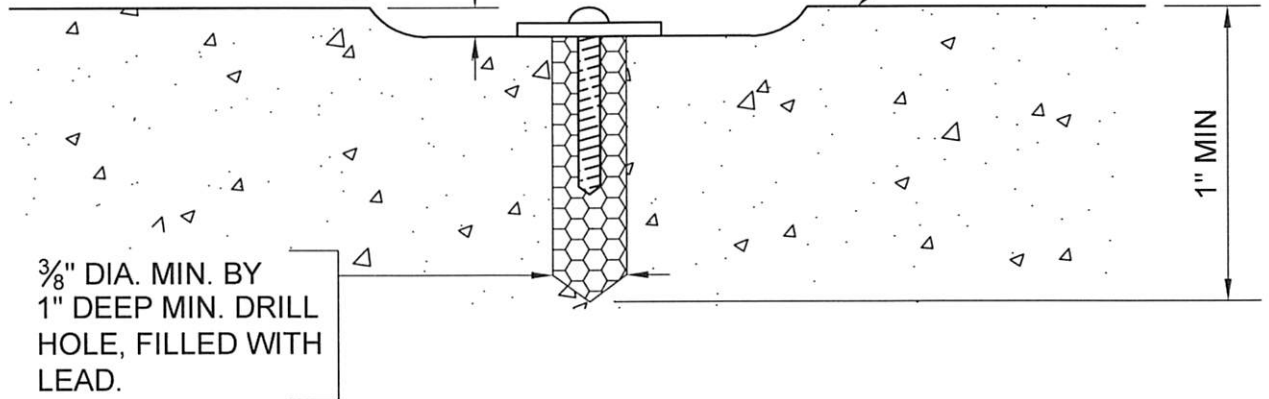
MONUMENT TYPE "E"



3/4" DIA. BRASS TAG WITH 3/4" LONG BRONZE, CORRUGATED SHANK NAIL OR 5/8" BRASS, ROUND HEAD NAIL.

COUNTERSINK TO KEEP HEAD OF NAIL BELOW FINISHED SURFACE

CONCRETE FINISHED SURFACE



3/8" DIA. MIN. BY 1" DEEP MIN. DRILL HOLE, FILLED WITH LEAD.

LEAD AND TAG



REVISION	DESIGN	DRAWN	DATE
ORIGINAL	AC/JAG	A.C./G.M.	07/02/07
REV. 1	AC/JF	J.F./G.M.	05/29/15

APPROVED BY THE CITY OF EL CENTRO PUBLIC WORKS DEPARTMENT, ENGINEERING DIVISION		
	R.C.E. 70281	05.29.15
ABRAHAM CAMPOS, P.E. SENIOR ENGINEER		DATE
	R.C.E. 24740	05.29.15
TERRY L. HAGEN, P.E. DIRECTOR OF PUBLIC WORKS		DATE

CITY OF EL CENTRO PUBLIC WORKS DEPARTMENT	
MONUMENT LEAD AND TAG	
DWG NO.	EC-1200 E